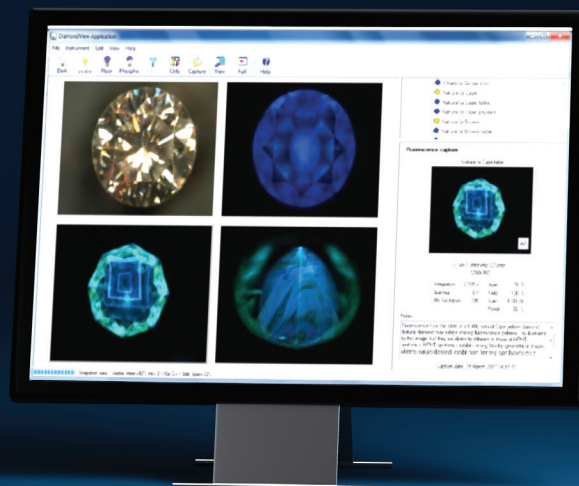


DiamondView Zoom

Price: On request

Job: To analyze DiamondSure, SynthDetect and AMS2 referrals



DiamondView ZOOM features an UltraXGA USB 3.0 high resolution camera to enable the operator to analyse images on a wide range of diamond sizes, from 0.01 ct to 10 cts.

With training the user can differentiate laboratory grown from natural diamonds and CVD from HPHT stones. The instrument analyses a diamond's surface fluorescence by illuminating it with short-wave ultra-violet light. An image of this is then viewable on a screen and a decision can be made as to whether the stone is natural, or laboratory grown.

Loose polished diamonds (0.01 – 10ct) are held in place by either a vacuum holder, or one of the additional holders available for large and small stones. It is also possible to view some jewellery pieces, such as stud earrings and simple rings, by changing the holder assembly and using the adapters provided. To aid user interpretation, easy to change filters are provided, which enhance specific growth features. Enabling a decision to be made.

The colour of the fluorescence, the fluorescence pattern and the absence or presence of phosphorescence will differ depending on the stones natural or laboratory grown origin.

Technical Specifications:

- Mains power adaptor cable with plug (for destination country)
- USB A-B cable
- USB 3 cable
- Memory stick (Windows 10 software required)
- Calibration samples (calcite & ball bearing)
- Suction cups (2 x 2.5mm & 2 x 3.5mm)
- Sample height-setting gauge
- Jewellery holder
- Quick Start Guide
- User manual
- 1 year parts/service warranty